

XG | IMAGEWALL MODULAR DISPLAY SYSTEMS

ImageWall is a versatile, robust and highly configurable modular display system designed for fast, tool-less assembly. With a lightweight aluminium construction and prefabricated frame design, ImageWall offers one of the fastest build times available.

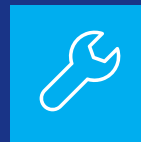
The system utilises push-fit connectors, providing a significant advantage in terms of speed and ease of build for teams working within busy exhibition schedules. Whether you're creating a simple backdrop, a full exhibition stand, or a multi-structure branded environment, ImageWall is ideal for exhibitions, displays, experiential activations, conferences, events, and retail. It provides flexible, reconfigurable modular display solutions for a wide range of environments.



RECONFIGURABLE



FAST BUILD



TOOL-LESS

WHY WE RECOMMEND IMAGEWALL MODULAR DISPLAY SYSTEMS

- Modular and reconfigurable for any space.
- Hidden tool-less system for fast, simple assembly.
- Lightweight, robust and easy to transport.
- Supports tension fabric, rigid and rollable graphics.
- Easily expanded or adapted as your requirements change.
- Reusable for long-term value.
- Professional, seamless finish for standout branding.

IMAGEWALL THE SYSTEM

ImageWall is a versatile modular display system designed to adapt to whatever you need it to be. Its reconfigurable framework makes it ideal for creating bespoke and tailored exhibition stands and display environments. With quick assembly, strong construction and impressive flexibility, it is a leading choice for brands looking for a reliable display solution.

The fully modular design uses a hidden, toolless connection method, allowing the system to scale easily. It is lightweight, simple to use and built to last, while supporting a wide range of graphic types including fabric, rigid and rollable panels. This provides one of the broadest branding options available in a single, easy to build system.

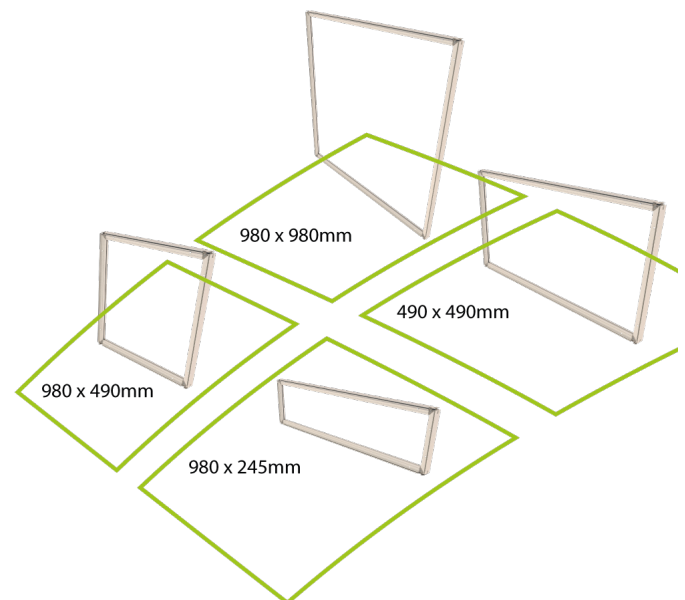
ImageWall offers a fresh approach to modular self build displays. It opens the door to countless layout possibilities, increasing reusability and helping you achieve real long term value from your investment.

STRAIGHT FRAMES

The ImageWall system features a range of straight and curved modular frames that can be combined to create a variety of layout configurations to suit your needs. Each frame is designed to accommodate board or textile graphics on both faces, offering maximum flexibility.

The 30mm double-sided profile delivers a sleek, slimline finish while maintaining versatility. The system is built around the 980 module, which includes full, half and quarter panels that can be used in any orientation. For added creativity, these panels can be paired with curved frames to produce striking stand designs.

Lightweight yet robust, the frames are extremely easy to assemble, making ImageWall a practical and stylish solution for exhibitions and displays.



STANDARD PANEL SIZES:

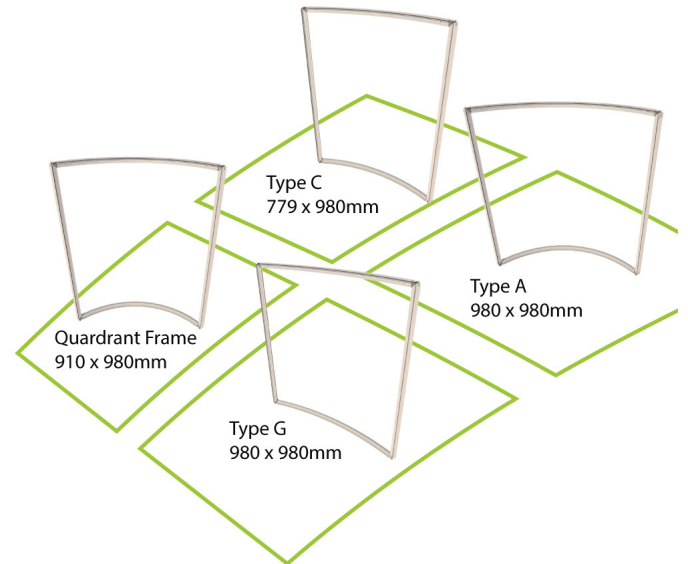
- 980 X 980mm
- 980 x 490mm
- 490 x 490mm
- 980 x 245mm

CURVED FRAMES

Curved frames are fully compatible with the ImageWall system and are designed to accommodate board or textile graphics on both faces. A variety of curves and radii are available, allowing you to create more complex, flowing shapes.

All curved frames work seamlessly with both straight and other curved modules, adding dimension, stability and visual interest to your stand. External curves feature a unique design that allows fabric to be fitted without distortion or deflection, ensuring a flawless finish.

Curved frames are lightweight, robust and easy to assemble, making them a practical and flexible solution for creating dynamic displays. Their versatility allows designers to combine multiple curves to achieve striking and engaging exhibition layouts.



PANEL SIZES:

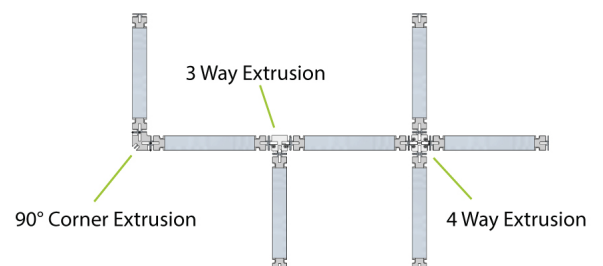
- Type A - 980 x 980
- Type C - 779 x 980mm
- Type G - 980 x 980mm
- Quadrant - 910 x 980mm

CORNER AND DIRECTION CHANGES

Creating corners and changing the direction of your display is simple with 90° corner uprights and 3-way T section uprights, all connecting easily using standard system connectors.

Corner uprights can accommodate both internal and external graphics. External fabric graphics can be fitted to match the frame size, allowing internal and external graphics to be interchangeable, or they can be fitted edge to edge for a nearly seamless appearance.

T section uprights enable a continuous wall to change direction mid-run, providing flexibility in creating dynamic display layouts.



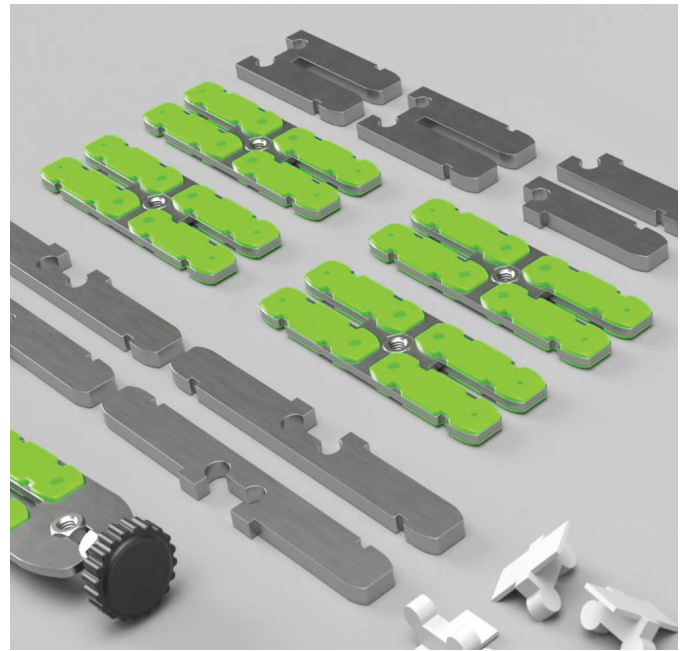
CONNECTORS AND FEET

ImageWall features a unique tool-less connecting system that is simple to use and highly effective. The slip-joint connector incorporates a damping system, creating a strong, secure connection between panels and allowing modular displays to be assembled quickly and reliably.

Specialised connectors are also available for adding lights, accessories, or for hinging frames in almost any configuration, offering maximum flexibility for your display designs.

To provide stability and a polished finish, the system includes two types of foot connectors:

- **FLAT FOOT:** Offer maximum stability and a clean, sleek appearance, attaching using the same tool-less connection system.
- **BLADE FOOT:** Provides strong stability with a stylish, streamlined look.



MODULAR KITS AND ACCESSORIES

ImageWall offers a wide range of modular kits and accessories that can be used independently or integrated with your display.

Low voltage LED spot lights clip easily onto the top edge of the frames, providing effective illumination for your stand. They are energy-efficient and economical to run.

Lightweight, slimline monitor brackets allow you to suspend 24" to 50" screens using a single versatile solution.

A variety of counters are available, designed to be used with the wall or as standalone units. Counters are simple to fix using a tool-less clip system and can be linked together to create continuous counter runs.

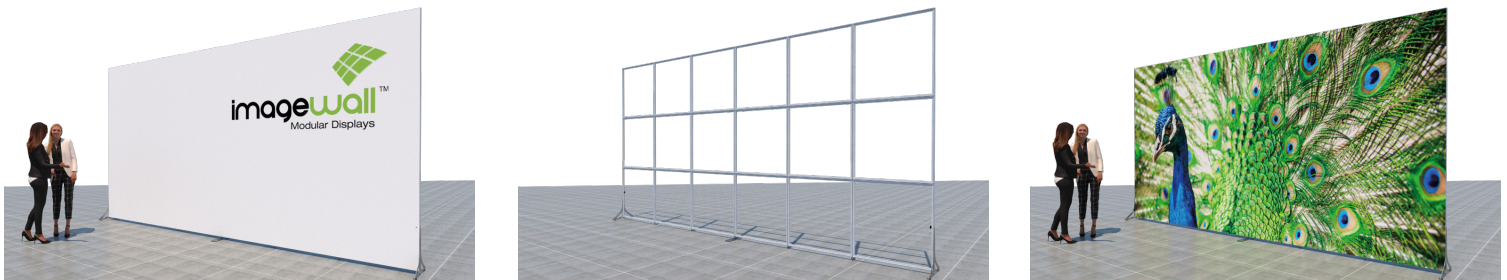
Cupboards can be used integrated or free-standing, offering shelves and lockable sliding doors for secure storage. Virtual counter kits, such as the reception unit, are also available to provide flexible, functional display solutions.



INTERCHANGEABLE GRAPHICS

ImageWall provides a flexible approach to branding, allowing graphics to be created for individual modules, panel drops or full seamless displays. This means your marketing messages and branding can be updated easily without changing the hardware. The possibilities for refreshing your display are virtually endless.

In addition to recommended eco-friendly dye sublimated block out tension fabric graphics, ImageWall supports a wide range of rigid and semi rigid substrates using its unique clip system. All graphics are fully interchangeable across media types, giving you complete versatility to update and adapt your displays as needed.



INFINITE APPLICATIONS

- **EXHIBITION AND DISPLAYS:** Small tradeshow and exhibitions (fit within Shell Scheme), exhibitions, space only, hanging displays and gantries.
- **EXPERIENTIAL**
- **MUSEUMS**
- **CONFERENCES**
- **RETAIL POS**
- **GENERAL DISPLAY:** Backdrops, Partitions.
- **ARCHITECTURAL:** Office pods, cladding.

