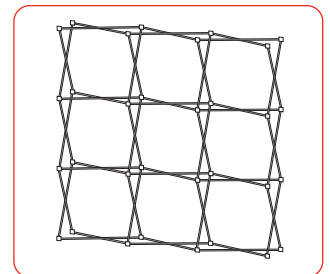
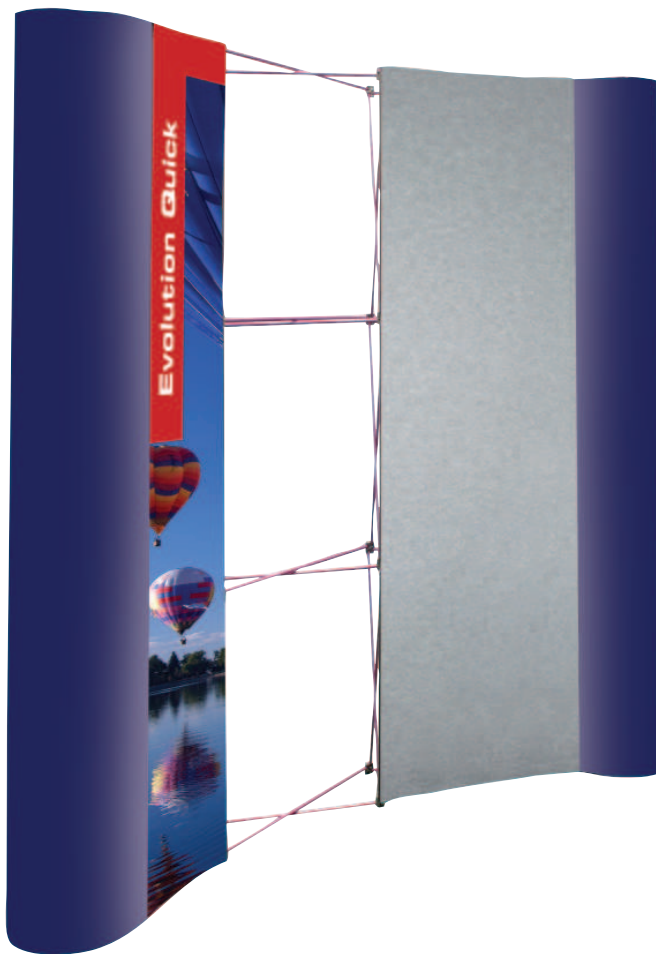


# Evolution Quick Pop-up



*A popular mid-range pop-up with self locating 'smart' magnetic locking arms, magnetic bars and clip-on graphic hanger fittings.*

## features and benefits

- Quality anodised finish
- Self-locating 'smart' magnetic locking arms and low profile mag bars
- Available as frame only or graphic hanging kit
- Option for graphics to be displayed on both sides
- All front curve / D-end panels are the same size
- D-end graphic panels also fit the Quick Tower
- Smaller graphic size 'Midi' version available
- Available in a combination of quad sizes from 1 x 1 desktop to 5 x 5 freestanding exhibition displays
- 3 quad graphic height 2225mm approx
- 3 quad midi graphic height 1850mm approx
- Fabric pop-up panels are also available
- Accessories include choice of Lighting and Transit cases

## Graphic Panel Sizes All measurements are in millimeters (mm)

Curved Widths	Front Panel	Rear Panel	D-End
Reg	673	807	673
Midi	550	675	673

Straight Widths	Front Panel	Rear Panel	D-End
Reg	733*	733*	673
Midi	605*	605*	673

Panel Heights	1 Quad	2 Quad	3 Quad	4 Quad	5 Quad
Reg Height	776	1495	2225	2968	3710
Midi Height	647	1245	1850	2455	-

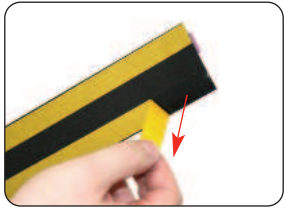
**NB** - Straight systems of no more than 4 quads high are recommended.

**NB** - Widths are consistent regardless of how many quads high the pop-up is.  
\*Straight systems allow + or - 1mm to allow for variances in floor surface.

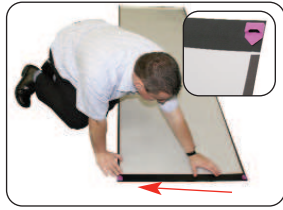
We are continually improving and modifying our product range and reserve the right to vary the specifications without prior notice. All dimensions and weights quoted are approximate and we accept no responsibility for variance. E&OE.

# Assembly Instructions

## Curved Graphic panel finishing



Remove the backing paper from the graphic hanger.



Apply the hanger to the top inside edge of the panel ensuring that it is flush to the panel edge.



Remove the backing paper from the kicker and apply to the bottom edge of the panel.

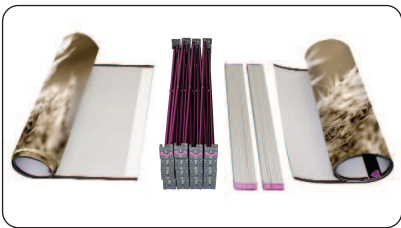


Remove the backing paper from the mag tape. Apply to both sides of the panel, keeping it flush to the edge.

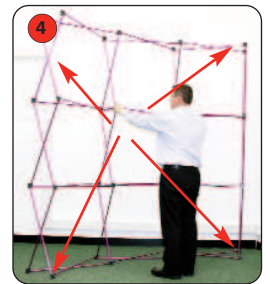
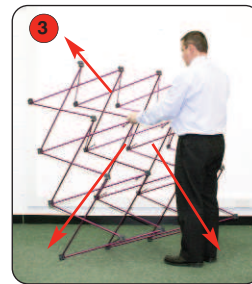


**NB D-End panels do not require kickers.**

## Curved Pop-up assembly



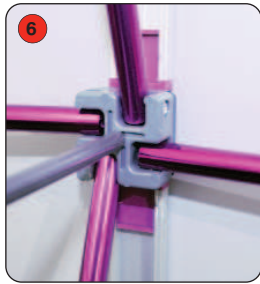
Kit includes: Pop-up frame, Mag Bars (for exact number refer to table on back page), D-end graphic panels and Front and/or rear graphic panels



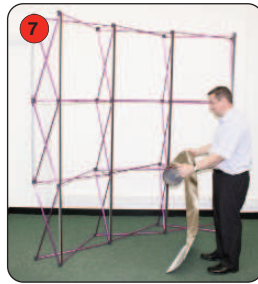
Take the frame, ensuring that the hanging studs are at the top. Stand the frame on the floor (2) and open up (3) until the locking arms lock the frame securely into place (4)



Add the mag bars onto the frame for front, D-ends and if applicable, the rear.



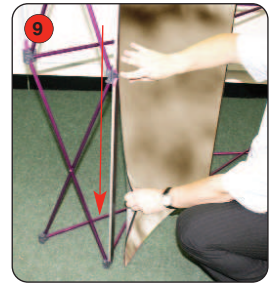
Ensure the mag bars lock onto the magnetic hubs securely.



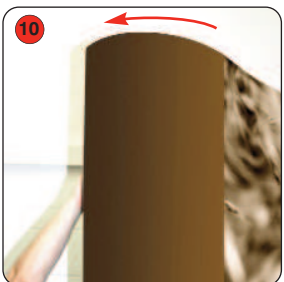
Unwrap each graphic carefully and attach to the frame.



Carefully hook the top hanger onto the studs of on the top node.



Smooth the graphic onto the mag bars, ensuring that it sits flat and is aligned to the centre line of each mag bar.



Attach the D-End panel front vertical edge. Curve the graphic round to the back and attach the back vertical edge to complete.



Repeat steps 8 and 9 for the rest of the graphic panels. This applies to front and rear graphics if applicable.

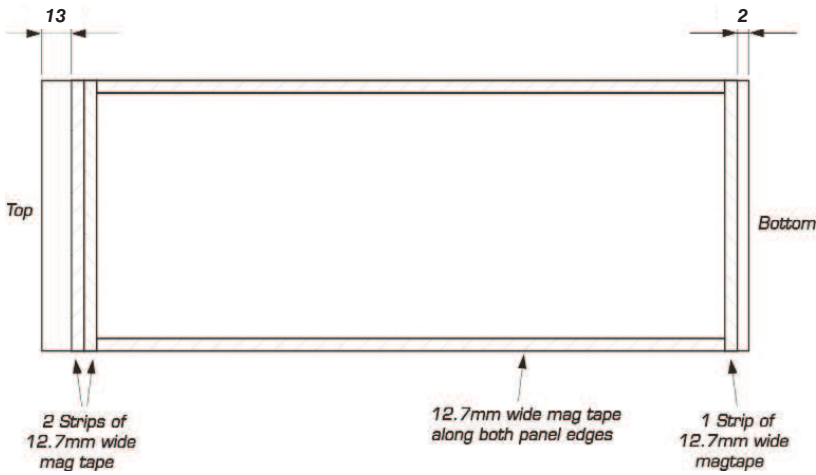


Finally, attach the remaining D-End panel.



**Important note:** Remove all mag bars before collapsing the pop-up frame.

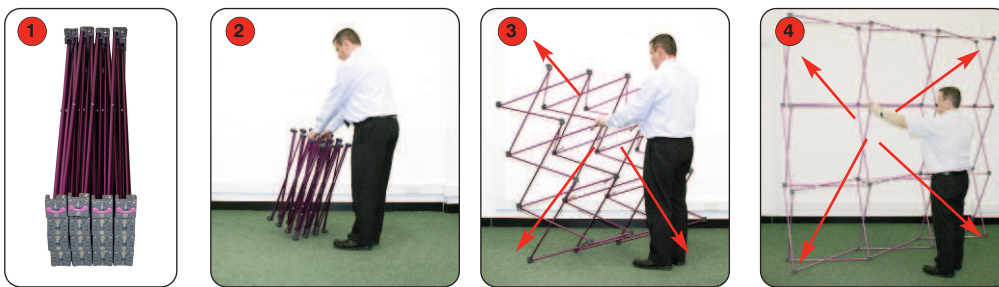
## Straight Graphic panel finishing



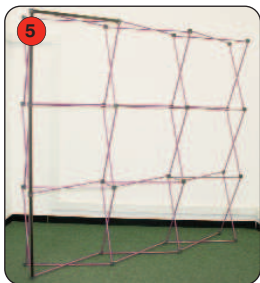
Apply mag tape to straight panels according to the diagram (all dimensions are approx).

NB - If using graphic panels with straight hangers follow the Curved graphic panel finishing instructions.

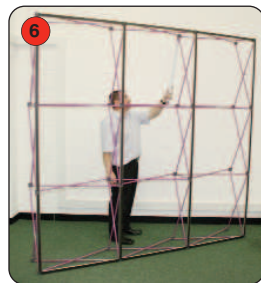
## Straight Pop-up assembly (using horizontal mag bars)



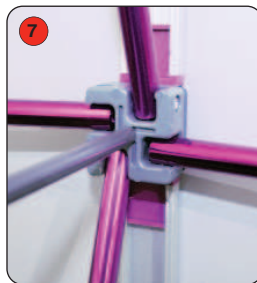
Take the frame, ensuring that the hanging studs are at the top. Stand the frame on the floor (2) and open up (3) until the locking arms lock the frame securely into place (4)



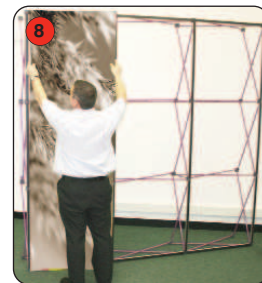
5 Add the mag bars onto the frame, vertically for front and D-end panels. Then add horizontal mag bars across the top and bottom of the frame.



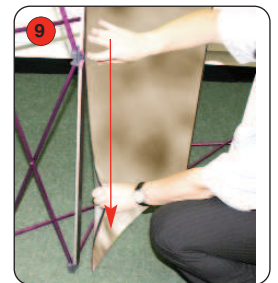
6 For Double sided graphics fit mag bars to the rear, running vertically and horizontally across the pop-up frame.



7 Ensure that the mag bars lock onto the magnetic pip securely.



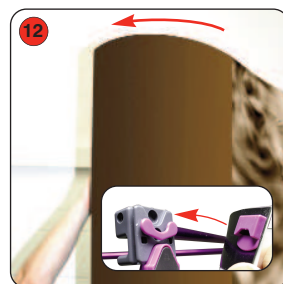
8 Unwrap each graphic carefully and attach to the system.



9 Smooth the graphic onto the mag bars, ensuring that it sits flat and is aligned to the centre line of each mag bar.



10 Repeat steps 8 and 9 for the rest of the graphic panels. This applies to front and rear graphics if applicable.



12 Attach the D-End panel front vertical edge. Curve the graphic round to the back and attach the back vertical edge to complete..



**Important note:**  
Remove all mag bars before collapsing the pop-up frame.

**NB - If using graphic panels with Straight hangers follow the assembly instructions for Curved pop-ups.**