

Physique Contour

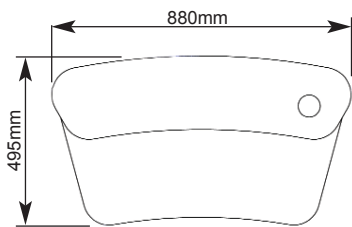
A range of tough, hardwearing counter display units in four unique new designs, constructed from flexible PVC tambour wraps and high quality finish thermoformed laminate tops.



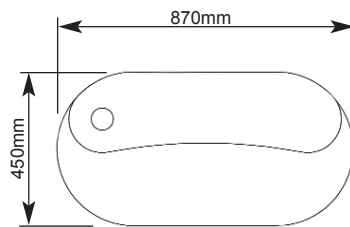
Keystone Pro
(Sliding lockable door is an extra cost option)

features & benefits

- Heavy duty physique counters constructed from MDF thermoformed tops and flexible PVC tambour wraps
- PVC tambour available in silver or white (Tambour is suitable for flat bed printing)
- Tops are available in Birch, Silver or Black thermoformed finishes
- Four designs: Keystone, Circuit, Island & Pebble
- Two styles: **Standard** top, base and wrap and **Pro** top, base, wrap, internal shelf, top shelf/wrap and cable management port
- No tools assembly, units flat pack for easy transportation
- Carry bags are available as extra cost options



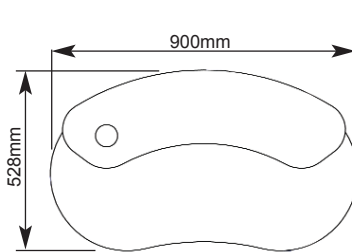
Keystone



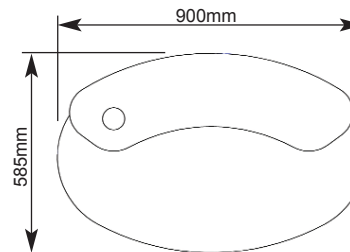
Circuit



Standard style is available in all four designs



Island



Pebble

(All dimensions shown are approx)



Pro style is available in all four designs
(Sliding lockable door is an extra cost option)

hardware specifications

Standard style units

Overall dimensions (h) x (w) x (d):

Keystone: 915mm x 880mm x 495mm

Circuit: 915mm x 870mm x 450mm

Island: 915mm x 900mm x 528mm

Pebble: 915mm x 900mm x 585mm

Pro style units

Overall dimensions (h) x (w) x (d):

Keystone: 1070mm x 880mm x 495mm

Circuit: 1070mm x 870mm x 450mm

Island: 1070mm x 900mm x 528mm

Pebble: 1070mm x 900mm x 585mm

Assembled weights

Standard style units: 11kg approx

Pro style units: 15kg approx

Wrap dimensions (h) x (w) for all styles

Main wrap: 900mm x 1705mm

Top shelf wrap: 145mm x 1184mm

Optional door wrap: 900mm x 558mm

Wrap visible areas: (h) x (w) for all styles

Main wrap: 884mm x 1705mm

Top shelf wrap: 129mm x 1184mm

Optional door wrap: 884mm x 558mm

NB 80mm width around handles is non printable

PVC tambour wrap thickness:

12mm approx

additional info

Optional accessories:

Sliding lockable door is an extra cost option for both Standard and Pro styles

Cable management ports and Internal shelves are extra cost options for Standard style units

Recommended carry bags:

1 x AB205 Wheeled carry bag is suitable for all Standard style units

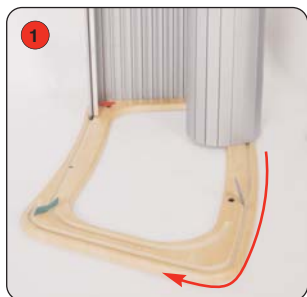
1 x AB205 Wheeled carry bag and 1 x AB206 Contour wrap carry bag are suitable for all Pro style units

Assembly Instructions

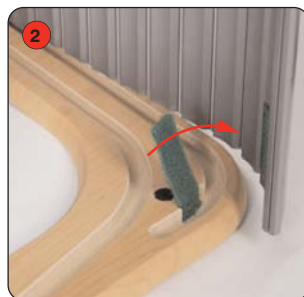
Standard style unit assembly (Applicable to all four designs)



Kit includes: Base, top and PVC tambour wrap



1 Lay the base on the floor, grooves side up and slot the tambour wrap into the base.



2 Secure the wrap to the base using the hook fastener tabs.

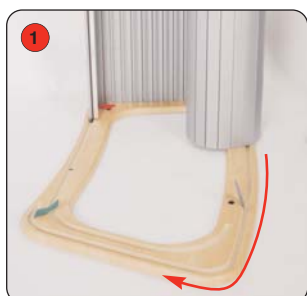


3 Lower the top onto the tambour, slotting into the groove. Secure using the hook fastener tabs.

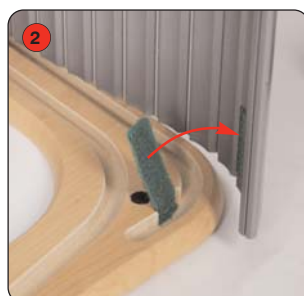
Pro style unit assembly (Applicable to all four designs)



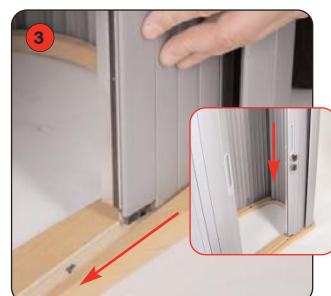
Kit includes: Base, top, PVC tambour wrap, internal shelf, top shelf, top shelf wrap & 3 off twist n lock poles



1 Lay the base on the floor, grooves side up and slot the tambour wrap into the base.



2 Secure the wrap to the base using the hook fastener tabs.



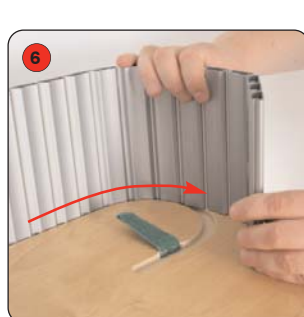
3 If applicable, slot the optional door wrap into the base groove and slide around.



4 Attach the internal shelf to the top using 3 off twist n lock poles.



5 Lower the top and shelf inside the half built unit, slotting the tambour into top grooves. Secure the top using the hook fastener tabs



6 Slot the top shelf wrap into the top. Secure using the hook fastener tabs.



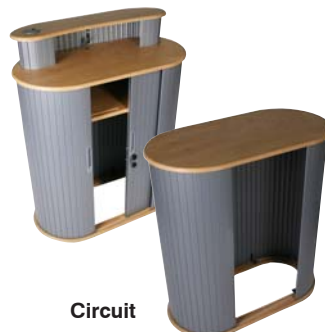
7 Finally lower the top shelf onto the tambour, slotting into the groove. Secure using the hook fastener tabs.



Keystone



Island



Circuit



Pebble

(Sliding lockable doors shown are extra cost options)