

Orbita Signage Systems



Stand-offs for signage or shelf mounts, available in a quality silver anodised finish. This attractive range includes options for wall and rail fixing. Orbita standoffs are suitable for a variety of rigid sign substrates including acrylic, plastics and timber.

features & benefits

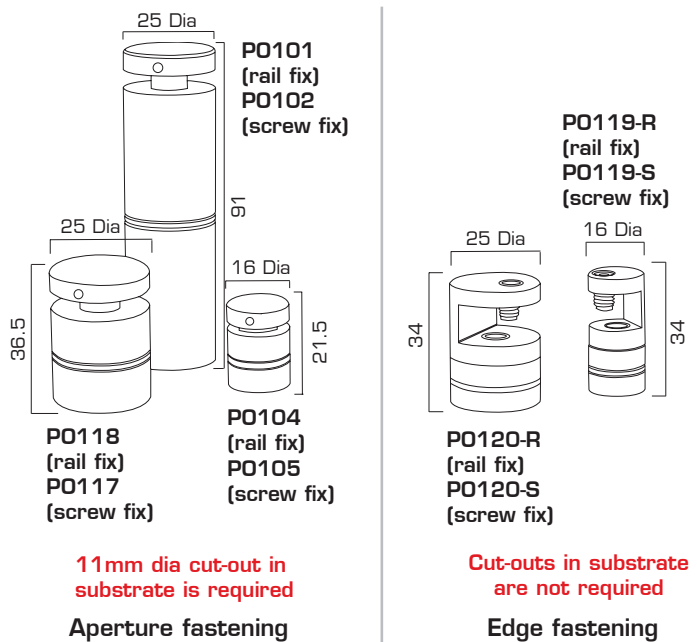
- Easy fix options for wall or rail mounting
- Ideal for Retail environments
- Choice of sizes
- Choice of Aperture or Edge fastening
- Quality silver anodised finish
- Substrate/signs are not included
- Aluminium rail is available by the metre



Aperture fastening



Edge fastening



All dimensions shown are in mm and are approximate

hardware specifications	P0101/02	P0104/05	P0117/18	P0119	P0120
Overall dimensions (height x diameter) (mm) approx:	91 x 25	21.5 x 16	36.5 x 25	34 x 16	34 x 25
Standoff distance from wall or ceiling (mm) (approx):	80	15	25	18.50	18.50
Weight kg (approx):	0.28	0.03	0.15	0.03	0.10
Recommended substrate thicknesses (mm):	5 to 20	2 to 10	2 to 10	2 to 10	2 to 10

Assembly Instructions

Aperture fastening standoffs Rail attachment instructions



Drill dia 11mm holes into the substrate.



Mount aluminium rails to the wall or ceiling.



Screw the brass rail insert into the standoff.



Fit the standoff into the rail channel, turn clockwise to secure.



Unscrew and remove the standoff cap.



Align the drilled holes in the substrate over the standoff.

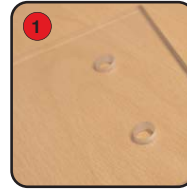


Refit the standoff cap to secure the substrate.

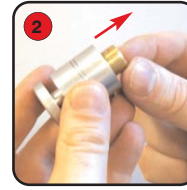


Repeat steps 3 to 7 for the remaining standoffs.

Aperture fastening standoffs Wall or ceiling attachment instructions



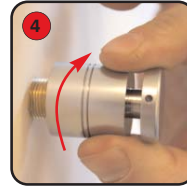
Drill dia 11mm holes into the substrate.



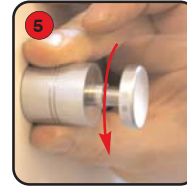
Unscrew and remove the brass insert.



Attach the brass insert to the wall or ceiling (Screw fasteners are not supplied)



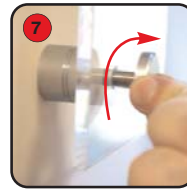
Attach the standoff to the brass insert, turn clockwise to secure.



Unscrew and remove the standoff cap.



Align the drilled holes in the substrate over the standoff.

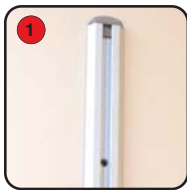


Refit the standoff cap to secure the substrate.

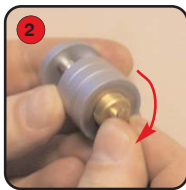


Repeat steps 2 to 7 for the remaining standoffs.

Edge fastening standoffs Rail attachment instructions



Mount aluminium rails to the wall or ceiling.



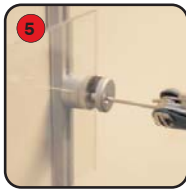
Unscrew the brass rail insert and ensure it is proud of the standoff.



Place the standoff into the rail channel, turn clockwise to tighten.



If required, rotate the position of the standoff using a 1.5mm Allen key.

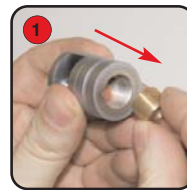


Slide the substrate into the standoff and tighten using a 2.5mm Allen key.

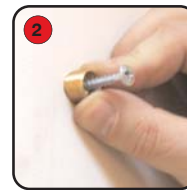


Repeat steps 2 to 5 for the remaining standoffs.

Edge fastening standoffs Wall or ceiling attachment instructions



Unscrew and remove the brass insert.



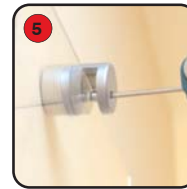
Attach the brass insert to the wall or ceiling (Screw fasteners are not supplied)



Attach the standoff to the brass insert, turn clockwise to tighten.



Slide the substrate into the standoff.



Using a 2.5mm Allen key tighten the standoff to the substrate.



Repeat steps 2 to 5 for the remaining standoffs.