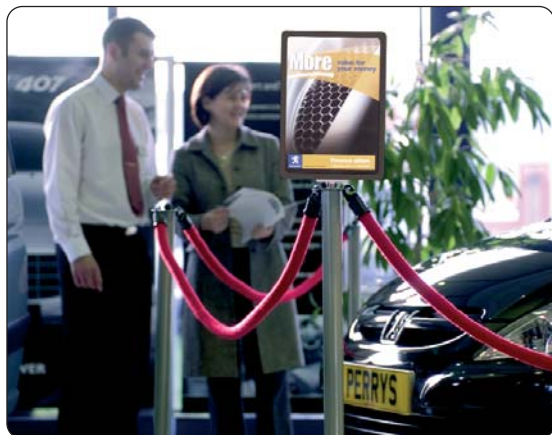


# Leader Systems



A versatile range of exhibition and event guidance systems. Cost effective and simple to use, Leader has many useful features and accessories.

## features & benefits

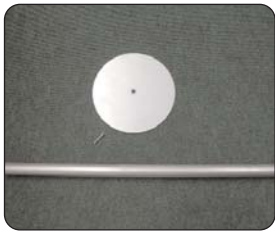
- Strong, durable exhibition and event queue guidance system
- Rope available in red, burgundy, blue or black
- Available as kits or individual components
- Metalwork in black or silver
- Wall fitting for rope available
- Optional sign systems in choice of sizes
- A3 angled Lecturn Shelf also available



code	hardware dimensions (mm)	weight	composition	additional info
<b>LB904</b>	305 (h) x 215 (w) x 10 (d)	0.8kg approx.	plastic	Allow 2mm bleed on graphic
<b>LB911</b>	1000 (h) x Dia 45	2kg approx.	steel with powder coated finish	Silver or black metalwork
<b>LB913</b>	15 (h) x Dia 300	3.5kg approx.	steel with powder coated finish	Silver or black metalwork
<b>LB950</b>	320 (h) x 450 (w) x 20 (d)	1kg approx.	steel with powder coated finish	Silver or black metalwork
<b>LB909</b>	1.5 (h) x Dia 88	0.08kg approx.	steel with powder coated finish	Silver or black metalwork
<b>LB908</b>	1000 (w) x Dia 24	0.2kg approx.	nylon / plastic	Available in red, burgundy,
<b>LB907</b>	1500 (w) x Dia 24	0.4kg approx.	nylon / plastic	blue or black

We are continually improving and modifying our product range and reserve the right to vary the specifications without prior notice. All dimensions and weights quoted are approximate and we accept no responsibility for variance. E&OE.

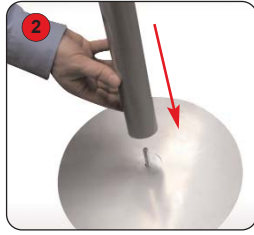
# Assembly Instructions



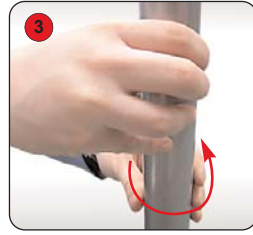
**Pole Kit**



1 Place M8 bolt through the countersunk side of the base.



2 Turn the base over and attach the pole onto the upturned bolt.



3 Turn pole to secure fit (it may be necessary to hold base still).



Once pole is assembled there are a number of options for usage (see below for assembly instructions)



**Rope Fitting kit**



1 Place the rope fitting over the top of the pole



2 Attach screw into top of pole through disc, turn screw to secure.



3 Rope can now be attached into any of the four holes.



4 To fix to wall, take wall mount (bought individually) and screw to wall.



**Poster Frame Kit**



1 Attach the spigot to the pole, turn to secure.



2 Slide the acrylic holder onto the spigot.



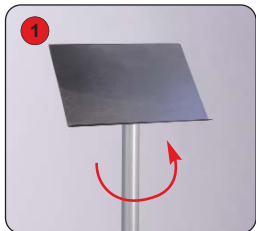
3 Take poster frame and slide in graphic through the open end (base).



4 Slide the poster frame onto the acrylic holder.



**A3 Angled Lecturn Kit**



1 Attach the lecturn to the pole, turn to secure.



Other products in our Promoter unit range include:



**Counta**

A lightweight, flat pack promotional unit, including header panel, shelf and twin poles. Supplied with bag.



**Tornado**

Outdoor promoter unit with hollow top and base for water or sand weighting to offer total stability. Optional support poles for header or umbrella.



**Wind Dancer**

Telescopic flag pole, adjustable height up to 5300mm. Hollow base for water or sand weighting for total stability.

